



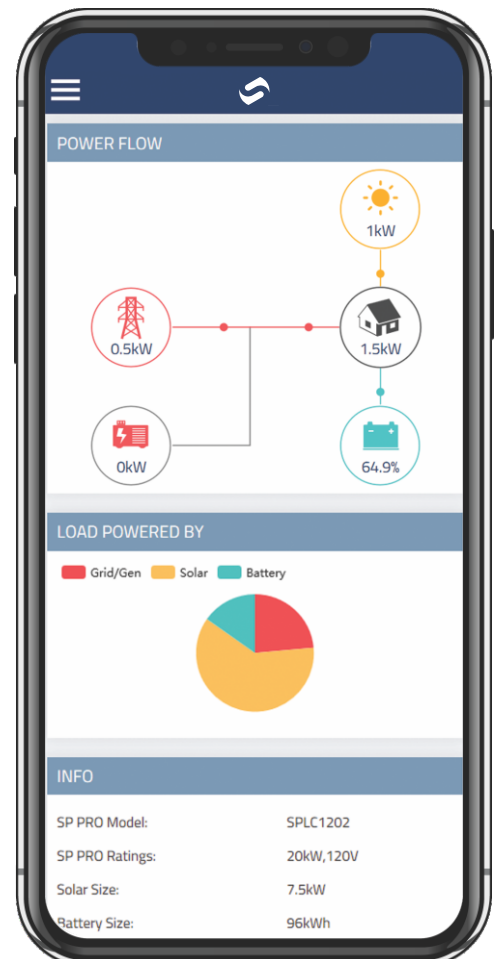
In today's digital age, immediate access to real-time information is no longer a luxury, it's a necessity. Presenting Select.live: a cutting-edge remote monitoring portal designed exclusively for Selectronic SP PRO solar power systems.

Key Features:

- **Real-time Monitoring:** Access your system in real time, ensuring you're always in the loop about its performance.
- **Universal Integration:** Seamlessly compatible with any battery storage system using a Selectronic SP PRO inverter.
- **Remote Assistance:** Grant your system installer access for advanced diagnostics, ensuring top-notch performance without the need for onsite visits.
- **Easily Accessible:** Our secure web-based portal can be accessed from any internet-connected device, wherever you are.

Product Highlights:

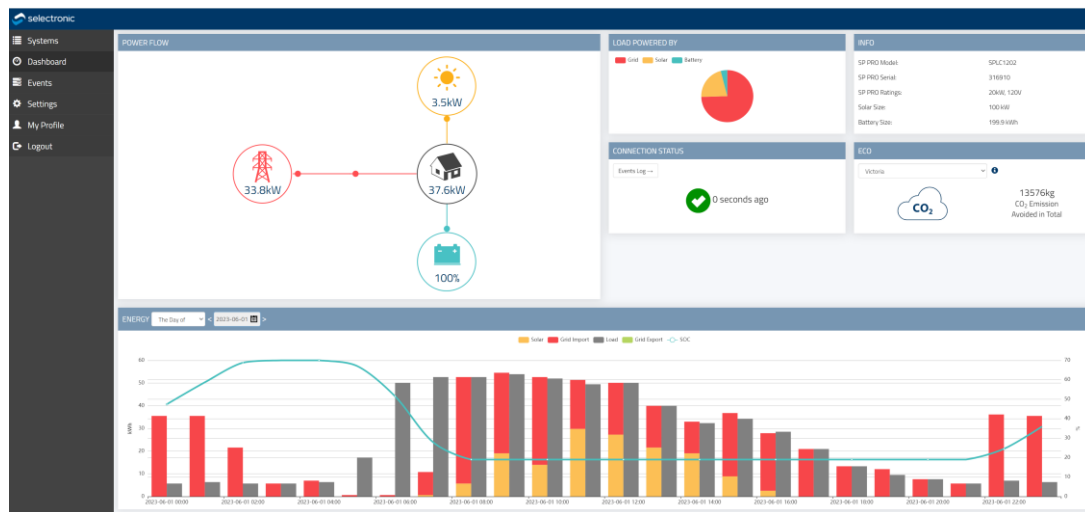
- **User-Friendly Dashboard:** Navigate with ease through an animated interface.
- **Power Insights:** Witness the real-time power flow of the SP PRO system.
- **Historical Data Visualization:** View bar and line graphs of energies, battery states, and more—ranging from hourly to yearly insights.
- **Cloud Connection:** Your data is safely stored and easily accessible on the cloud.
- **Alert Overview:** At a glance, be informed of any system alert events.
- **Eco-Metrics:** Track your contribution to the environment by viewing CO₂ emission reductions for each Australian state.
- **Device Versatility:** Optimal viewing on various screen sizes, ensuring you get the best experience regardless of the device.
- **Compact Design:** A small, lightweight, wall-mounted unit that integrates effortlessly with most SP PRO systems.
- **SP LINK Compatibility:** Ensuring wider utility and ease of connection.



select.live

Equip yourself with Select.live and experience solar power management like never before.

Select.live Dashboard



Select.live Specifications

Features	Description
Connections available	WiFi and Ethernet
Wireless	802.11b/g/n Wi-Fi 2.4GHz
Wireless range	100m max line of sight. Site specific
Wired connectivity	Serial RS232, 10/100 Ethernet
Wired connection length	Up to 1.5m for Serial RS232
Graph shows	Solar,* Generator, Grid, AC Load, Export, State of Charge
Graph options	Day, week, month, year
Updates	Automatic
Notifications	SP PRO alert via Email
Connection without Internet	Not possible
Suitable system	Powerchain, single-phase, dual-phase, split-phase and three-phase. One Select.live per system
Data / Logging refresh rate	10s / 60s
Dimensions	H 163mm x W 163mm x D 32mm
Weight	315g
LCD display	Yes
Housing material	UV stabilized PC+ABS
IP rating	IP43
Device operating temperature	2 to 70°C
Operating humidity	5 to 95% humidity
Operating system	Embedded Linux
Power Method	SP PRO Series II, 2i directly from the SP PRO via serial cable SP PRO Series I - External plugback (Included in additional kit, Order Code: 005290)
Rating	12V, 1A Max
Warranty	2 Years